

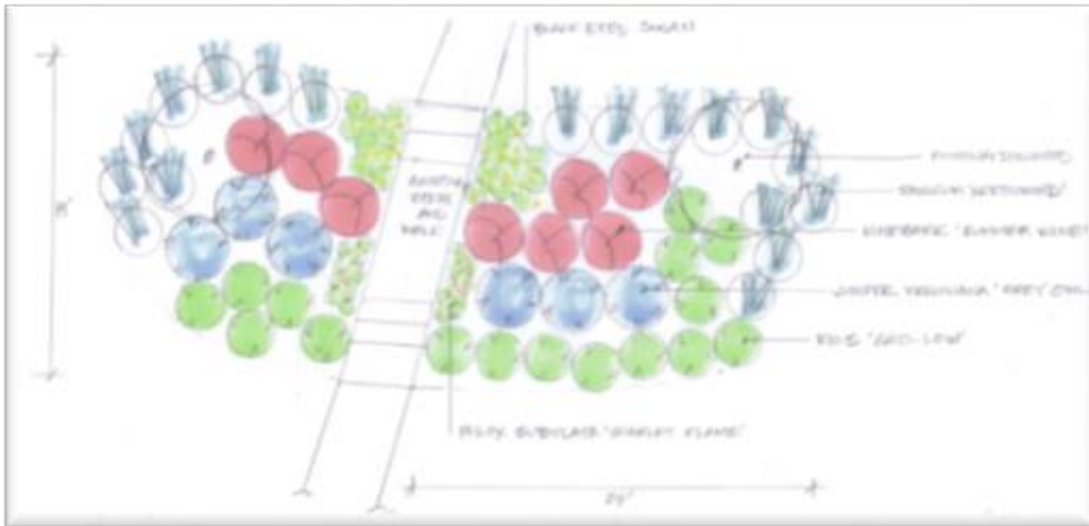


Stormwater Solutions Rain Garden Tour

Property 2018-3: Conservation Landscaping

CONSERVATION LANDSCAPING can help protect air and water, manage stormwater, conserve energy, and provide a more beautiful, healthier human environment. By using native plants and low-input designs, you'll reduce water, pesticide and fertilizer use, and save time compared to maintaining a lawn. Native plants are a vital element in a conservation landscape — they've adapted to the local climate, need little fertilizing, and are typically more drought-tolerant and pest-resistant than introduced varieties. Many are also important food and shelter sources for birds and beneficial insects, including honeybees, ladybugs, and butterflies.

www.montgomerycountymd.gov/water/stormwater/



Project Location	Front Yard
Project Size	810 sq ft
Drainage Area Treated	1590 sq ft
Rain Amount Treated	4"
Installation Year	2017
Contractor	Green Value Landscape & Design

FoCJC does not endorse any specific person or product.