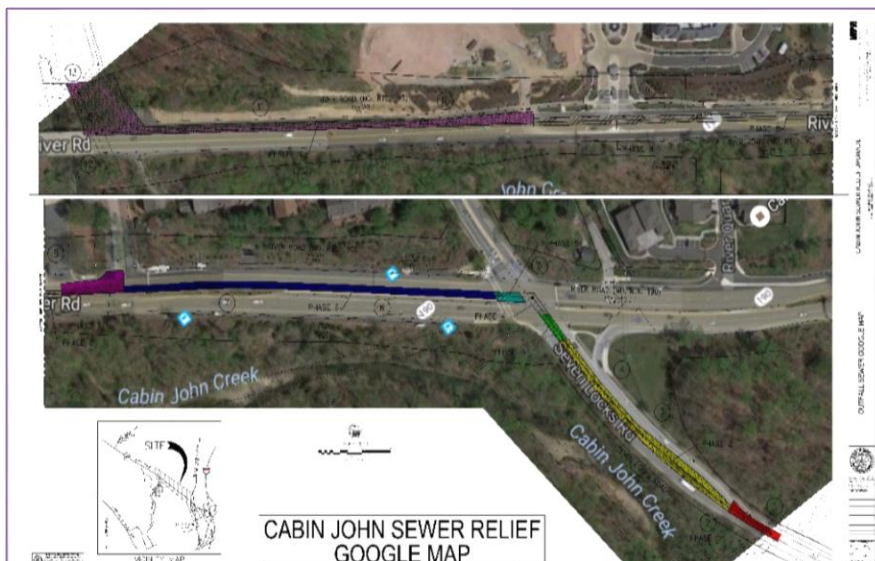


# Cabin John Trunk Relief Sewer

The Cabin John Trunk Relief Sewer Project is a new, 3,200 linear foot, 24" diameter sewer segment being built within the Cabin John watershed. This sewer will supplement the capacity of an existing sewer in this location.



## Who

The project is part of the Washington Suburban Sanitary Commission's approved Capital Improvements Program and is being constructed by Gaines Construction and Jansen Land Consulting, on behalf of Federal Realty Investment Trust, which is required by WSSC to build the project as part of the approvals for its Pike & Rose development project. When completed, the project will become part of WSSC's system, and WSSC will handle ongoing operations and maintenance.

## Project Milestones

### February '17

Project Start

### Spring '19

Project Completion

**Note:** Work on the project will occur during the day and at night, depending on the type of work being performed, weather and other circumstances. Work during the day will be performed only during permitted hours between 9am and 3pm. For more information, see phasing diagram under Additional Resources section.

## Additional Resources

- [Project Map](#)
- [Project Map \(Aerial\)](#)
- [Phasing Plan](#)
- [Overview of System Development Charges Presentation](#)
- [Maintenance of Traffic Plan](#)

## More Project News

### Where

The project will span approximately 3,200 linear feet, starting on Seven Locks Road several hundred feet south of the intersection with River Road, continuing north through that intersection, then west onto River Road until its intersection with the Cabin John Creek (see project map below). The sewer itself will traverse that route underneath the roadway, either in a travel lane or the shoulder, for its entire route, save for a small segment (about 100') at the western terminus, where it will run north from River Road to connect with an existing sewer adjacent to the Cabin John Creek. This route is a revision to the original plan for the project, which called for the sewer to be installed immediately adjacent to the Cabin John Creek in the wooded area to the south of River Road in this location.

### Why

The project is necessary to provide additional capacity to handle wastewater from current and future development and redevelopment, including Pike & Rose, within the Cabin John basin. The project will also reduce the risk of sewer overflow events in the basin during periods of heavy usage.

### How

The project team will use a combination of trenching and tunneling to install the new sewer beneath the roadways, connecting with existing sewers on each end. Work will proceed in phases starting at the southern end of the project on Seven Locks Road and proceeding to the northern end on River Road. During daytime construction, one lane of traffic in each direction will be maintained. Because project work is largely confined to the roadway, there will be minimal impact to existing trees. Any trees that are impacted will be replaced as part of reforestation process at the conclusion of the project. The project is expected to cost approximately \$14m and will be paid for by Federal Realty Investment Trust, who will then be repaid by other users of the system via the System Development Charge (SDC) Program. As such, no taxpayer or ratepayer money will be used to fund the project.

## Contact

Timothy Brooks  
Contract Manager, Systems  
Inspection Group  
Washington Suburban Sanitary  
Commission  
301-206-7339  
[Timothy.Brooks@WSSCwater.com](mailto:Timothy.Brooks@WSSCwater.com)

## More Information

[www.cabinjohnsewerproject.com](http://www.cabinjohnsewerproject.com)