



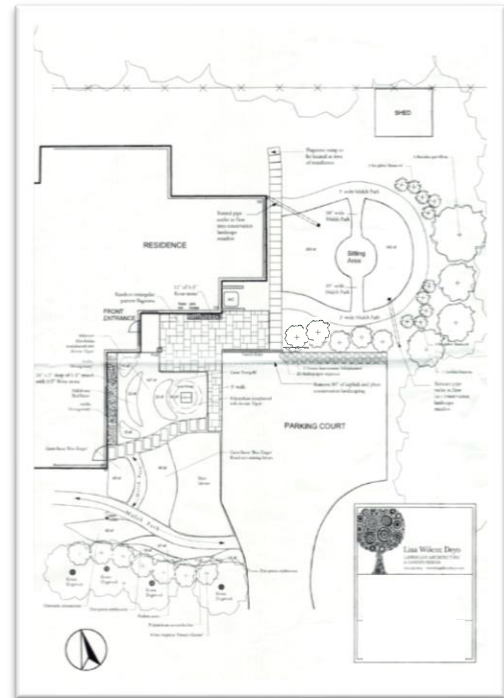
Stormwater Solutions Rain Garden Tour

Property 2018-7: Conservation Landscaping

CONSERVATION LANDSCAPING can help protect air and water, manage stormwater, conserve energy, and provide a more beautiful, healthier human environment. By using native plants and low-input designs, you'll reduce water, pesticide and fertilizer use, and save time compared to maintaining a lawn. Native plants are a vital element in a conservation landscape — they've adapted to the local climate, need little fertilizing, and are typically more drought-tolerant and pest-resistant than introduced varieties. Many are also important food and shelter sources for birds and beneficial insects, including honeybees, ladybugs, and butterflies.

www.montgomerycountymd.gov/water/stormwater/

Project Location	Right Front Yard
Project Size	850 sq ft
Drainage Area Treated	1600 sq ft
Rain Amount Treated	4"
Installation Year	2016
Contractor	L.W. Deyo / Roots Landscaping



HOMEOWNER COMMENTS Registering for the RainScapes program was very easy, and the monetary incentive made the cost somewhat easier to bear. The Montgomery County staff were helpful and responsive. The installation was relatively rapid, and, surprisingly, most of the plants survived the first winter. It has taken a couple of seasons to really take off. By and large, the deer have not bothered the meadow plants, which were selected on the basis of deer-resistance. rather than as a source of spring or summer color. It has required very little maintenance beyond simple weeding. One issue is that the drain tubing tilts slightly upward where it daylights, and water collects in the end of the tubing. A longer drain tube would fix the problem.

FoCJC does not endorse any specific person or product.