

Cabin John Creek Watershed Resource Conditions

Montgomery County, Maryland



Cabin John Watershed

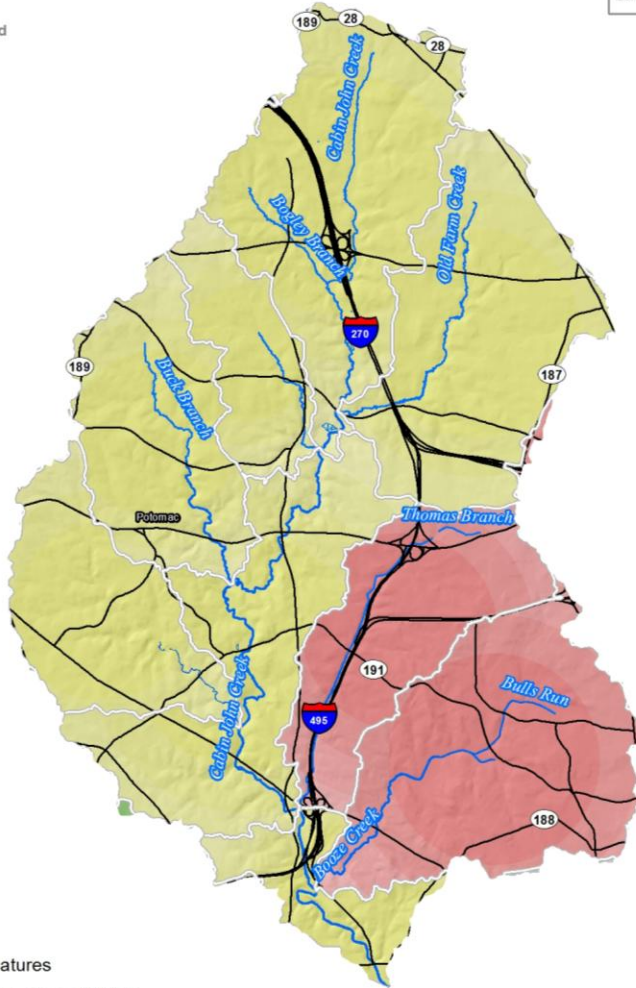
Metadata

Date: January 2010

Source: Montgomery County Department of Environmental Protection

Description: Stream resource conditions represent the average of baseline station scores within each watershed or tributary polygon. There may be more than one monitoring station within each watershed or tributary polygon. Stream resource conditions within Special Protection Areas (SPAs) are not averages, but rather are the most recent stream condition scores based on the drainage areas to the specific SPA monitoring sites.

Contact: Jennifer St. John - jennifer.stjohn@montgomerycountymd.gov
 For stream monitoring program questions:
 Keith Van Ness, Senior Water Quality Specialist
keith.van Ness@montgomerycountymd.gov



Legend

- Streams
- Major Water Features
- Special Protection Areas (SPAs)
- Municipalities

Watershed Resource Condition

- Excellent
- Good
- Fair
- Poor
- Not Monitored

