

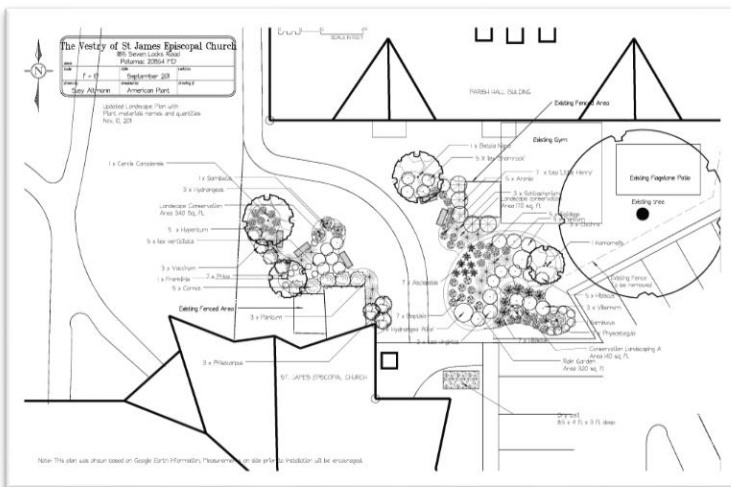


Stormwater Solutions Rain Garden Tour

Property 2018-1: Rain Garden

RAIN GARDENS are attractive landscape features constructed to capture stormwater runoff from hard surfaces such as your roof, driveway, patio, or sidewalk. A rain garden is a garden with a shallow depression that collects and drains stormwater. Rain gardens typically are planted with native plants with deep roots that loosen the soil, so stormwater can soak into the ground more easily. Rain gardens help to meet the RainScapes’ goal of using innovative natural approaches to reduce water pollution, stream channel erosion, and drainage problems caused by stormwater runoff.

www.montgomerycountymd.gov/water/stormwater/



Project Location	Rear Parking Area
Project Size	650 sq ft
Drainage Area Treated	6360 sq ft
Rain Amount Treated	1.5"
Installation Year	2012
Contractor	American Plant

FoCJC does not endorse any specific person or product.

Friends of Cabin John Creek ♦ www.cabinjohncreek.org